



Ringways, CH62 3NG

£195,000

3 Bedroom 1 Reception 1 Bathroom C

Three Bedroom Semi - Popular Bromborough Location - A Perfect First Time Buy

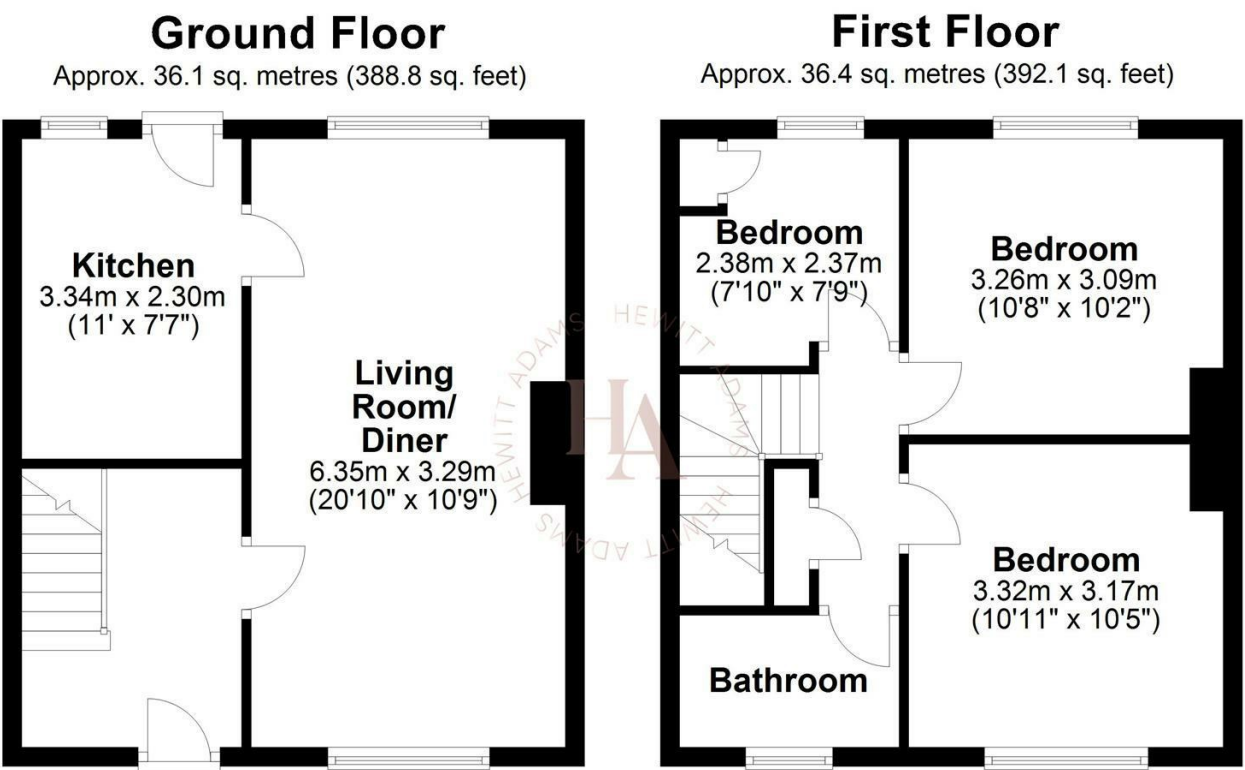
Hewitt Adams is delighted to offer to the market this three bedroom semi detached home on the quiet cul-de-sac Ringways in Bromborough - a short distance from the centre of the village, and within walking distance of a wide range of local amenities.

In the agents opinion this is a perfect property for anyone looking to get onto the property ladder and put their own stamp on their first home.

In brief the accommodation affords: entrance hall, lounge dining room, kitchen. Upstairs there are three good sized bedrooms and the family bathroom.

With off-road driveway parking and a large rear garden mainly laid to lawn that offers great scope for future landscaping.

Call Hewitt Adams on 0151 342 8200 to view.



Total area: approx. 72.5 sq. metres (780.9 sq. feet)
For illustration purposes only - not to scale

Front Entrance

Into:

Hall

Stairs to first floor, radiator, power points

Living Room

20'9" x 10'9" (6.35 x 3.29)

Double glazed windows to front and rear, radiator, power points, gas fire, space for dining table and chairs

Kitchen

10'11" x 7'6" (3.34 x 2.30)

Wall and base units, inset sink, integrated oven and gas hob, space for fridge freezer, space and plumbing for washing machine, double glazed window, door to rear

Bedroom

10'10" x 10'4" (3.32 x 3.17)

Double glazed window, radiator, power points

Bedroom

10'1" x 10'8" (3.09 x 3.26)

Double glazed window, radiator, power points

Bedroom

7'9" x 7'9" (2.37 x 2.38)

Double glazed window, radiator, power points

Bathroom

4'6" x 7'7" (1.38 x 2.32)

Comprising bath with shower above, w.c, wash hand basin, radiator, part tiled walls, double glazed window

Externally

Front - Off road parking for two cars

Rear - spacious garden mainly laid to lawn with garden shed and side gate access to the front

